

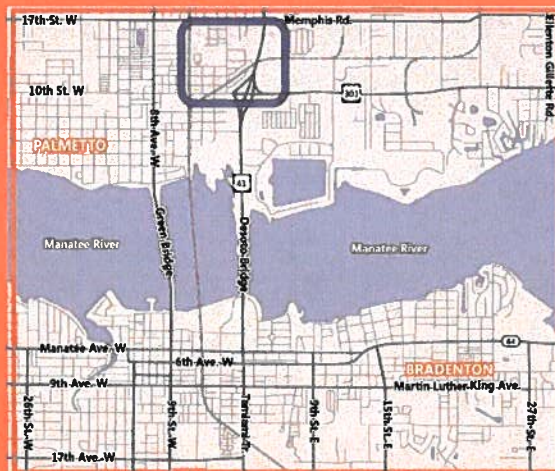
Project Purpose

A goal for the City of Palmetto is developing a safe and convenient trail and linear park system that connects community assets. The City has already begun developing this system, most notably with the recent completion of the Martin Luther King, Jr. Trail. Park and trail projects on the horizon include the Lincoln Park Pool, Washington Park (located just east of the US 41/US 19 interchange), and the regional trail facility proposed under the state's SUNTrail program. Considering the existing facilities and plans for future park and trail facilities, the CMNAA study team developed the following recommendations to create an integrated park and trail network that serves the community's recreation and mobility needs.

Implementing Agencies

Florida Department of Transportation
City of Palmetto
Manatee County
Sarasota/Manatee Metropolitan
Planning Organization

Project Location



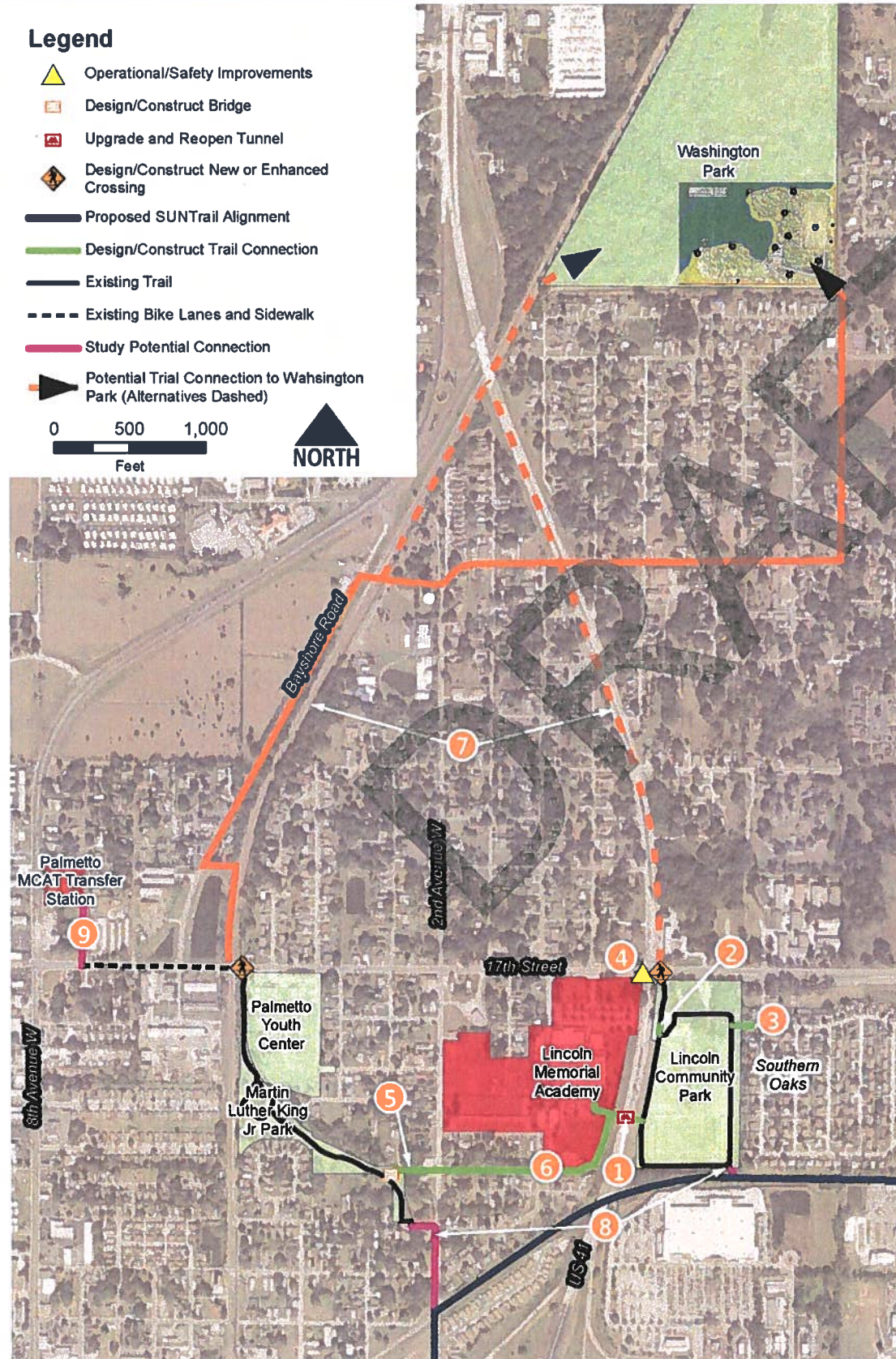
Overview

Legend

- Operational/Safety Improvements
- Design/Construct Bridge
- Upgrade and Reopen Tunnel
- Design/Construct New or Enhanced Crossing
- Proposed SUNTrail Alignment
- Design/Construct Trail Connection
- Existing Trail
- Existing Bike Lanes and Sidewalk
- Study Potential Connection
- Potential Trial Connection to Wahsington Park (Alternatives Dashed)

0 500 1,000
Feet

NORTH



Phase 1A

1 Trail Connecting Lincoln Memorial Academy to Lincoln Park

- Design and construct an independent pathway from Lincoln Memorial Academy to Lincoln Park
- Upgrade and reopen the tunnel under US 41

2 Trail Connecting Lincoln Park to 17th Street

- Design and construct a formal connection across the Lincoln Park parking lot

Phase 1B

3 Trail Connecting Lincoln Park to Southern Oaks

- Design and construct an independent pathway connecting Lincoln Park to the neighborhood to the east, Southern Oaks, generally along the 16th Street E alignment

Phase 1C

4 Operational/Safety Improvements at US 41 & 17th Street Intersection

- Modify signal operation to better service eastbound right turning traffic from 17th Street to US 41 south
- Construct an eastbound right turn lane at the intersection

Phase 2A

5 Trail Connecting Martin Luther King, Jr. Trail to 2nd Avenue W

- Design and construct independent pathway to connect the existing Martin Luther King, Jr. Trail to 2nd Avenue W along the City-owned corridor east of 2nd Avenue W to the School Board property
- Design and construct a bridge spanning the drainage canal at the western end of the proposed trail

Phase 2B

6 Extension of Phase 2A Trail to Lincoln Memorial Academy Tunnel

- Design and construct an extension of the Phase 2A independent pathway to connect to the independent pathway proposed between Lincoln Memorial Academy and Lincoln Park

Study 1

7 Trail Connecting Washington Park to Trail System

- Study the feasibility of connecting the proposed Washington Park to the trail system in Palmetto via the Bayshore Road/ Rail Corridor, the US 41 corridor, or both

Study 2

8 Trail Connections to SUNTrail

- Study, design, and construct a roadside pathway between the existing Martin Luther King, Jr. Trail and the proposed SUNTrail alignment along 2nd Avenue W
- Study, design, and construct a trail connection from the Lincoln Park Trail to the regional SUNTrail alignment

Study 3

9 Trail Connecting Palmetto MCAT Transfer Station to Palmetto Youth Center

- Study the addition of a bike lane or roadside pathway along 7th Avenue W to connect the Palmetto MCAT Transfer Station to the Palmetto Youth Center via the existing bike lanes and sidewalks on 17th Street
- Study the addition of a new crossing of 17th Street at the intersection with the existing Martin Luther King, Jr. Trail