

SKETCH OF DESCRIPTION

Section 21 & 28, Township 35 South, Range 18 East
Manatee County, Florida

DESCRIPTION: UTILITY EASEMENTS

ANY PART OF THOSE PRIVATELY MAINTAINED PORTIONS OF SEWER LINES, AS DESCRIBED IN THAT CERTAIN EASEMENT AND MAINTENANCE AGREEMENT RECORDED IN O.R. BOOK 1768, PAGE 3816, PUBLIC RECORDS OF MANATEE COUNTY, FLORIDA AND REFERENCED SHADED AREAS DEPICTED ON THOSE CERTAIN "RECORD DRAWINGS FOR THE VILLAGE OF PALM AIRE - NORTH UTILITIES" PREPARED BY KIMLEY-HORN AND ASSOCIATES, INC., DATED 4/01/98, LYING WITHIN THE FOLLOWING DESCRIBED TRACTS OF LAND, TO-WIT:

TRACT A, TREYMORE AT THE VILLAGES OF PALM AIRE UNIT 1, A SUBDIVISION, AS RECORDED IN PLAT BOOK 34, PAGE 1, PUBLIC RECORDS OF MANATEE COUNTY FLORIDA. BEING AND LYING IN SECTIONS 21 & 28, TOWNSHIP 35 SOUTH, RANGE 18 EAST MANATEE COUNTY, FLORIDA.

TRACT B, TREYMORE AT THE VILLAGES OF PALM AIRE UNIT 2, A SUBDIVISION, AS RECORDED IN PLAT BOOK 35, PAGE 110, PUBLIC RECORDS OF MANATEE COUNTY FLORIDA. BEING AND LYING IN SECTION 28, TOWNSHIP 35 SOUTH, RANGE 18 EAST MANATEE COUNTY, FLORIDA.

TRACT C, TREYMORE AT THE VILLAGES OF PALM AIRE UNIT 2, A SUBDIVISION, AS RECORDED IN PLAT BOOK 35, PAGE 110, PUBLIC RECORDS OF MANATEE COUNTY FLORIDA. BEING AND LYING IN SECTION 28, TOWNSHIP 35 SOUTH, RANGE 18 EAST MANATEE COUNTY, FLORIDA.

TRACT C, TREYMORE AT THE VILLAGES OF PALM AIRE UNIT 3, A SUBDIVISION, AS RECORDED IN PLAT BOOK 37, PAGE 35, PUBLIC RECORDS OF MANATEE COUNTY FLORIDA. BEING AND LYING IN SECTION 28, TOWNSHIP 35 SOUTH, RANGE 18 EAST MANATEE COUNTY, FLORIDA.

TRACT D, TREYMORE AT THE VILLAGES OF PALM AIRE UNIT 3, A SUBDIVISION, AS RECORDED IN PLAT BOOK 37, PAGE 35, PUBLIC RECORDS OF MANATEE COUNTY FLORIDA. BEING AND LYING IN SECTION 28, TOWNSHIP 35 SOUTH, RANGE 18 EAST MANATEE COUNTY, FLORIDA.

NOTES:

1. NOT VALID WITHOUT THE SIGNATURE AND THE ORIGINAL RAISED SEAL OF A FLORIDA LICENSED SURVEYOR AND MAPPER.
2. THIS DESCRIPTION IS NOT COMPLETE WITHOUT THE SKETCH.
3. THIS SKETCH IS NOT A SURVEY.

PREPARED FOR:

TREYMORE AT THE VILLAGES OF PALM AIRE



CROSS SURVEYING, L.L.C

CERTIFICATE OF AUTHORIZATION LB 0007977

5265 OFFICE PARK BLVD. SUITE 101
BRADENTON, FLORIDA 34203
(941) 748-8340 (941) 896-9938 FAX


GERALD D. STROOP, JR., PSM, NO. 4678

SHEET
1 OF 2

Scale: 1" = NONE

Drawn by: GDS

FB/PG: NONE

DATE: 8/9/2017

JOB: 170524

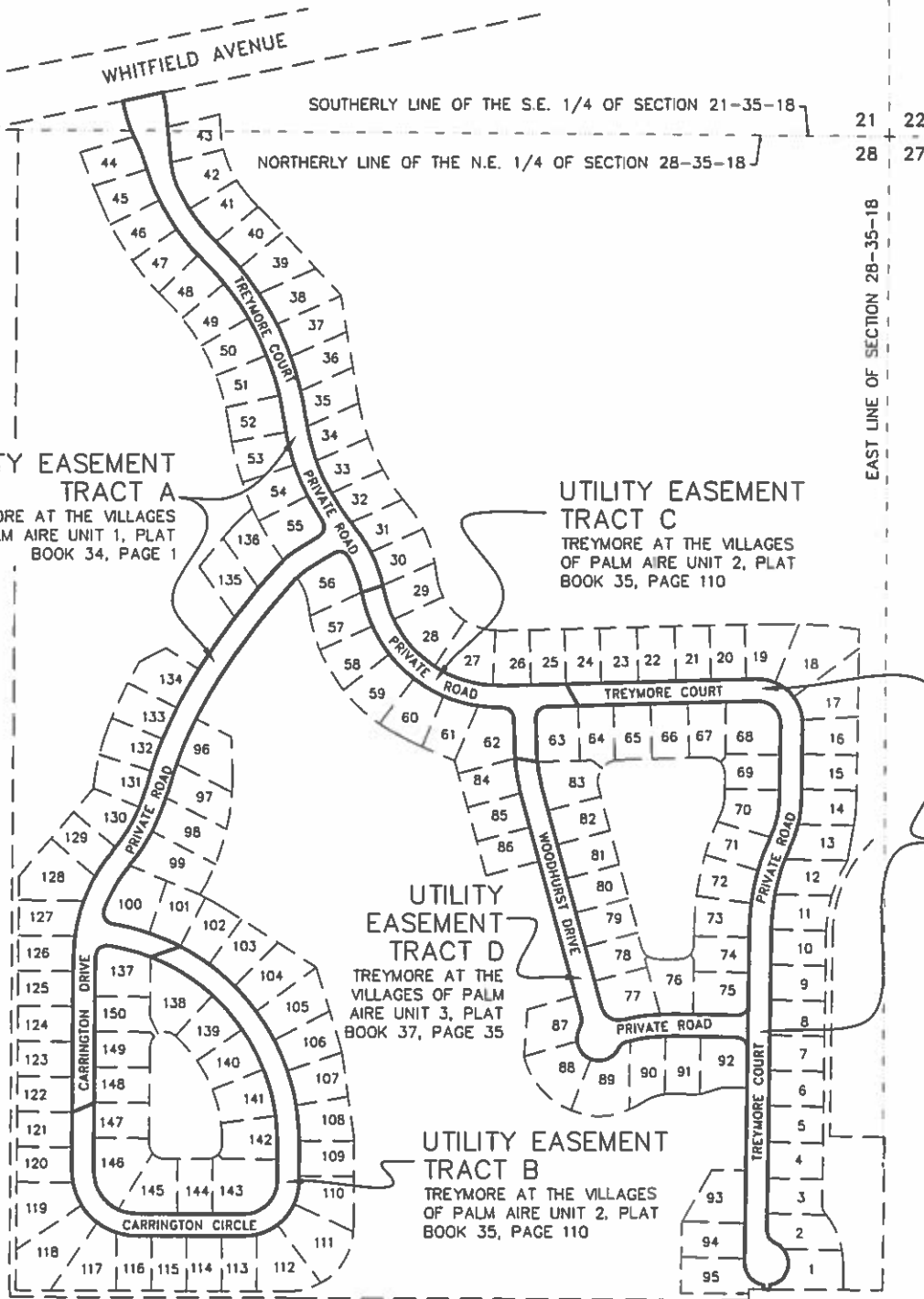
NOTES

1. NOT VALID WITHOUT THE SIGNATURE AND THE ORIGINAL RAISED SEAL OF A FLORIDA LICENSED SURVEYOR AND MAPPER.
2. THIS SKETCH IS NOT COMPLETE WITHOUT THE DESCRIPTION.
3. THIS SKETCH IS NOT A SURVEY.

SKETCH OF DESCRIPTION

Section 21 & 28, Township 35 South, Range 18 East
 Manatee County, Florida

Drawing name: \\2012SRV\ESS\CadServ\Land_Proj\TREMORE AT THE VILLAGES OF PALM AIRE 170524.dwg\SKETCH AND DESC.dwg 8.5X11 (2) Sep 19, 2017 2:38pm by: dstroop



CROSS SURVEYING, L.L.C
 CERTIFICATE OF AUTHORIZATION LB 0007977
 5265 OFFICE PARK BLVD. SUITE 101
 BRADENTON, FLORIDA 34203
 (941) 748-8340 (941) 896-9938 FAX

Gerald D. Stroop, Jr.
 GERALD D. STROOP, JR., PSM. No. 4679

SHEET 2 OF 2	Scale: 1" = 400'	Drawn by: GDS	FB/PG: NONE	DATE: 8/9/2017
				JOB: 170524