

July 10, 2017

Ms. Vickie Warner  
Address Coordinator  
Manatee County Building and Development Services  
1112 Manatee Avenue West, 4th Floor  
Bradenton, FL 34205

**RE: Armstrong, Len Tran, Inc, Turner, Cone and Graham Inc./Silverstone  
MEPS 637/DTS 20160639/PDR-16-21(Z)(P)  
ZNS Project No: 44277**

Dear Vickie:

The purpose of this letter is to respectfully request a Street Designation Waiver in order to allow public streets within Armstrong, Len Tran, Inc, Turner, Cone and Graham Inc./Silverstone to carry names as permitted in Section 1001.8.E, LDC, which states:

"Streets may be assigned names where the street is designed in such a curvilinear fashion that it would be difficult to number due to its various directional changes or within subdivisions or planned developments upon the recommendation of the local Fire District, Public Safety, Environmental Management, and Building and Development Services Departments and approved by the Board of County Commissioners."

Thank you for your consideration of our request.

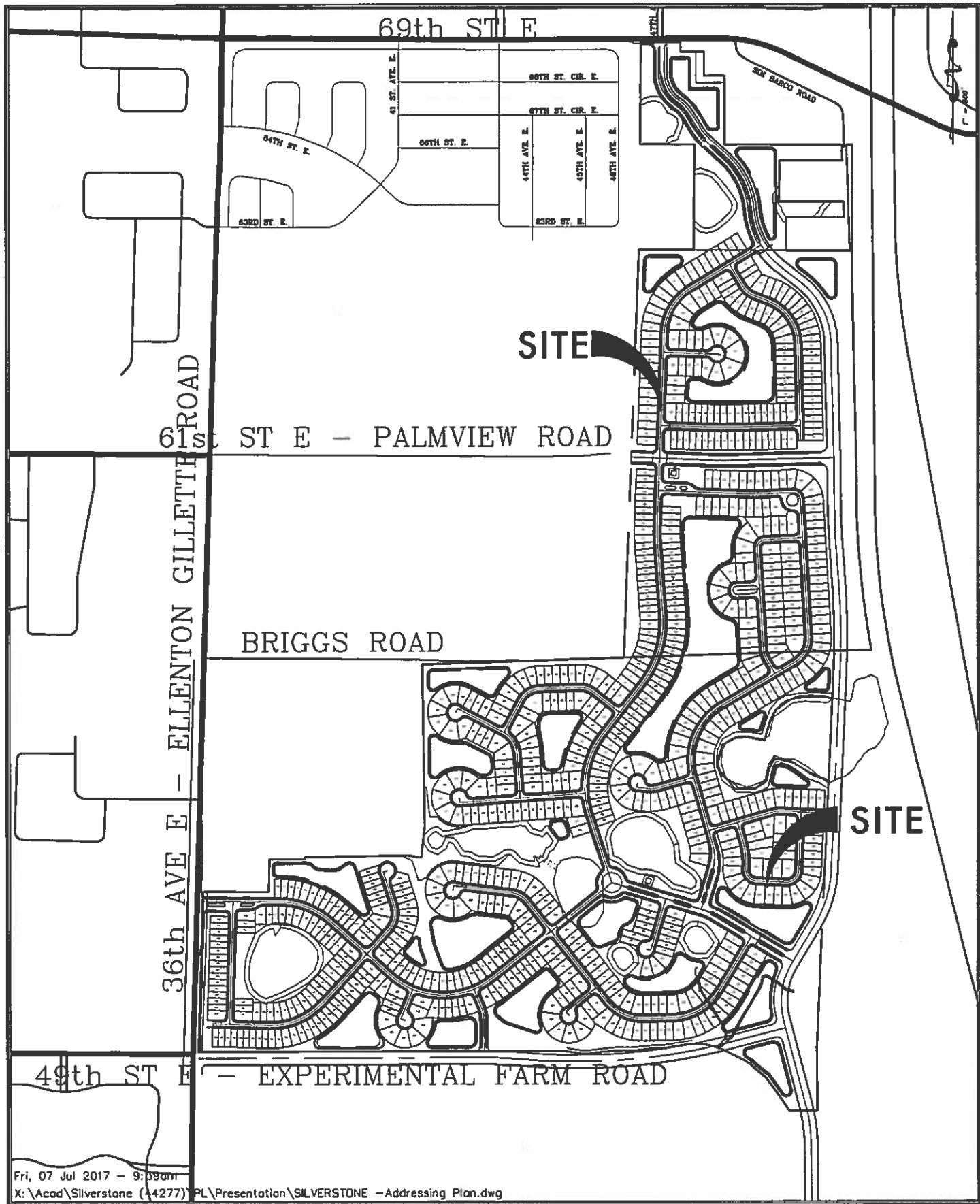
Respectfully submitted,  
**ZNS ENGINEERING, L.C.**



**RACHEL WHITCOMB LAYTON, AICP**  
Director of Planning

cc: Paul Uter, Ellenton Land Holding Company, LLC  
Marion Uter, Ellenton Land Holding Company, LLC  
Nathan Kragt, P.E., ZNS Engineering, LC

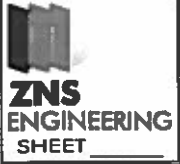




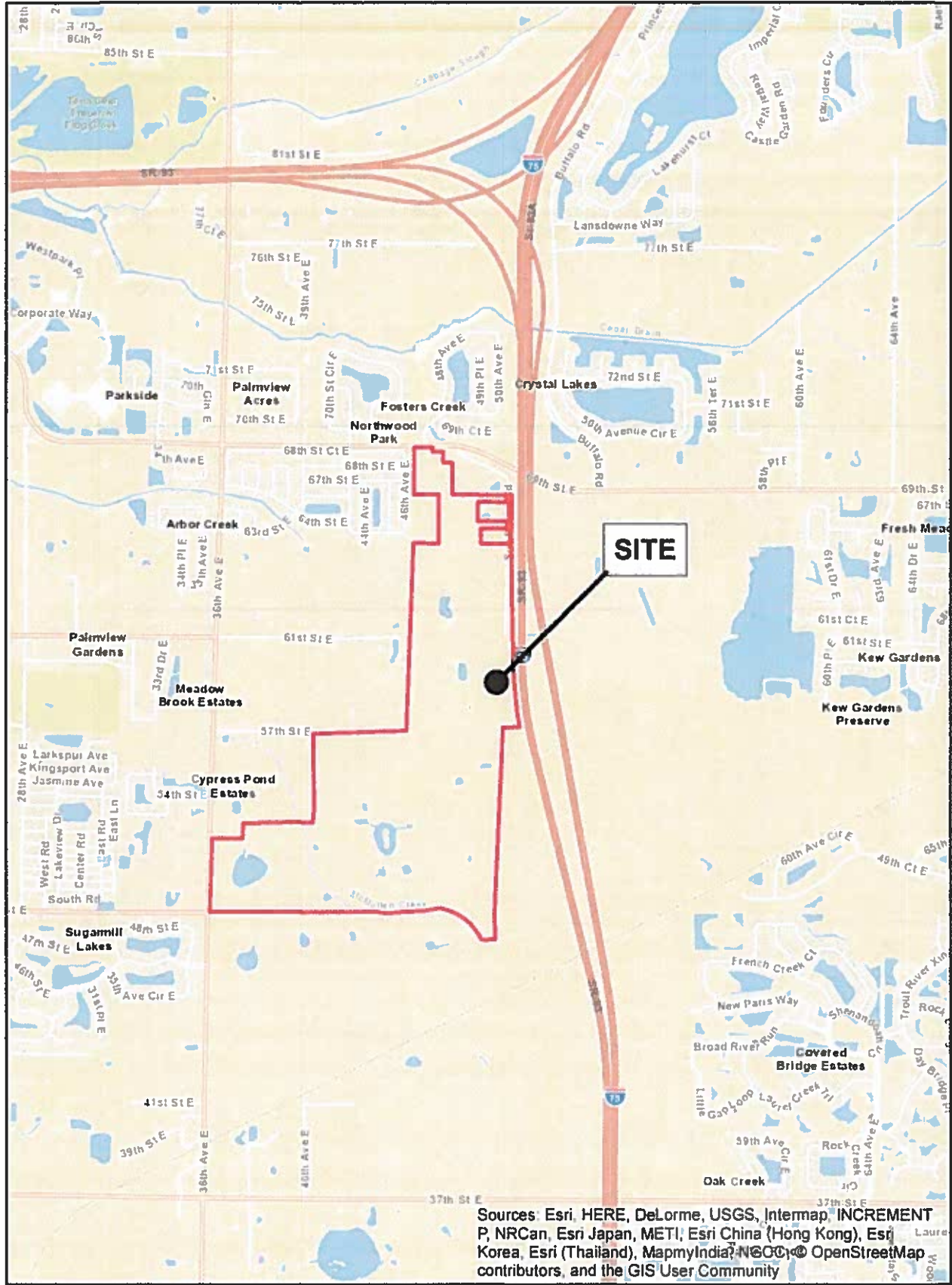
Fri, 07 Jul 2017 - 9:59am  
 X:\Acad\Silverstone (4277)\PL\Presentation\SILVERSTONE - Addressing Plan.dwg

© ZNS ENGINEERING, L.C.  
 THIS DOCUMENT IS PROTECTED BY SECTION 106 OF THE UNITED STATES COPYRIGHT ACT. REPRODUCTION OR ALTERATION OF THIS DOCUMENT OR THE INFORMATION CONTAINED HEREON BY ANY MEANS WHATSOEVER IS STRICTLY PROHIBITED WITHOUT THE PRIOR WRITTEN CONSENT OF ZNS ENGINEERING, L.C. CONSENT IS HEREBY GRANTED SPECIFICALLY TO GOVERNMENTAL AGENCIES TO REPRODUCE THIS DOCUMENT IN COMPLIANCE WITH F.S. CHAPTER 119.

ADDRESSING PLAN - PROJECT AREA MAP  
 FOR  
**SILVERSTONE**  
 LOCATED IN  
 SECTION 29 & 32, TOWNSHIP 33 SOUTH, RANGE 18 EAST  
 MANATEE COUNTY, FLORIDA



# ADDRESSING LOCATION MAP



Sources: Esri, HERE, DeLorme, USGS, Intermap, INCREMENT P, NRCan, Esri Japan, METI, Esri China (Hong Kong), Esri Korea, Esri (Thailand), MapmyIndia, © OpenStreetMap contributors, and the GIS User Community

