

Former Riverside Products Site  
4443 W. 30<sup>th</sup> Street, Bradenton, Manatee County, Florida  
Site # COM\_65187/Project # 66025

History

The Former Riverside Products (FRP) operated as a machine shop from 1963. FRP machined various metals, including brass, aluminum and stainless steel that created a waste stream consisting of metal shavings and cutting oils that were stored onsite in drums and dumpsters. Operations involved machining metal stock into finished parts for other industrial businesses to use in finished products.

The Manatee County DOH observed oil stained soil on the FRP site during a compliance inspection on January 9, 1989. A report entitled "Contamination Evaluation Report," dated May 31, 1989 showed contamination in the soil and pond sediment in the eastern section of FRP site. The FRP case was then referred to the FDEP.

On June 4, 1991

- A consent order (OGC Case# 91-0401) was entered into between Riverside Products, Inc. (previous owner of the site) and the Department. Riverside Products, Inc. was required to implement the corrective actions set forth in the document entitled: "Corrective Actions for Ground Water Contamination Cases."

In 1994

- Riverside Products, Inc. declared bankruptcy and ceased site rehabilitation activities.

On April 26, 1996

- National Industrial Property, LLC (formerly Land Recovery Investment, Inc.) purchased the property from Riverside Products, Inc. Upon purchase of the site, National Industrial Property, LLC voluntarily proceeded with site rehabilitation activities.

August 1996

- CERCLA screening was conducted, but concluded that the site posed a low risk for soil, groundwater, surface water and air.

December 1998

- Deep wells DMW-13 and DMW-14 were sampled for volatile organic compounds. There were no detections above Groundwater Cleanup Target Levels (GCTLs).

July 2002

- Deep well DMW-13 was sampled for volatile organic compounds. There were no detections above the GCTLs.

On May 28, 2003

- Conditional approval of a NAM plan occurred.

December 18, 2006

- DEP conducted potable well survey. Two potable wells were found within a ¼ mile radius and these wells were sampled and the groundwater analyzed for contaminants of concern. There were no exceedances.

On November 9, 2007

- The first NAM report was received. Deep well DMW-13 was sampled for VOCs and metals. Results were below GCTLs.

On March 20, 2008

- The Department provided comments on the NAM report and indicated that soil and shallow groundwater delineation was incomplete. Following issuance of the Department's 2008 comment letter, the RP was unresponsive.

#### Current

On January 27, 2014

- A consent order was executed between the Department and National Industrial Properties, LLC requiring the submittal of a Site Assessment Report Addendum (SARA).

On September 24, 2014

- The SARA was submitted. Deep well DMW-13 was sampled for VOCs and metals. Results were below GCTLs. However, additional soil and shallow groundwater delineation was warranted.

On September 10, 2015

- SARA was submitted. An offsite well was installed on the ROW. However, concentrations were above the GCTLs. Soil was still not delineated.

October 21, 2016

- Final order granting access to adjacent property to install off-site wells was issued by the Department.

March 10, 2017

- SARA submitted indicating that additional monitoring wells were installed on adjacent property showing that the groundwater is delineated. Additional soil sampling was also conducted, however the Department had some comments on the soil sampling. The comments mostly related to the Quality Control of the data on the summary tables. This requires clarification before determining if soil delineation is complete. A response to comments is due on June 5, 2017.

Attachment 1 – GW Flow Direction

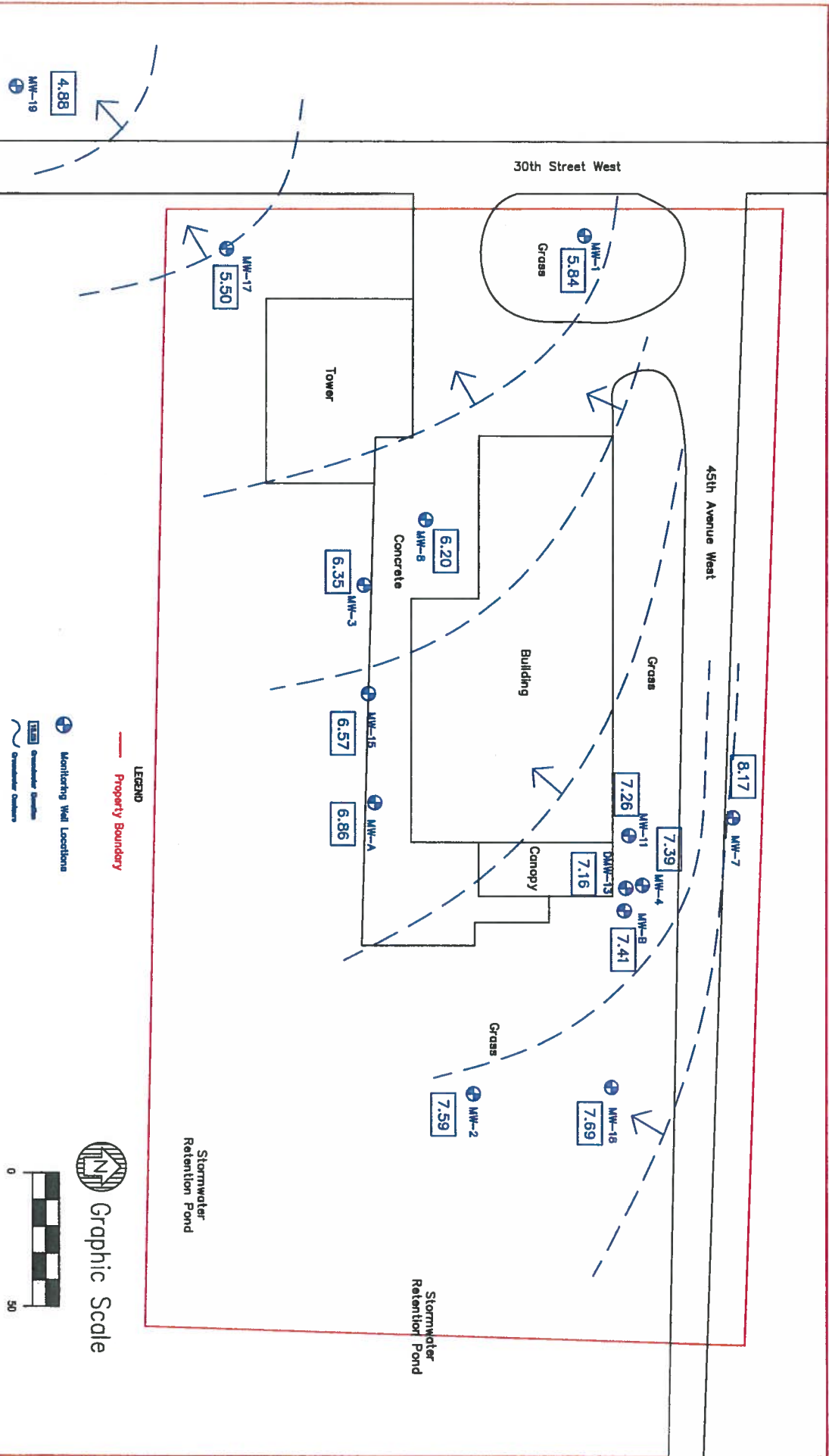
Attachment 2 - Groundwater Plume

Attachment 3 – Summary Data for Deep Wells

Attachment 4 – Location of Deep Wells

Attachment 5 – FDEP Well Survey

## **Attachment 1 – GW flow direction**



# Former Riverside Products

4443 West 30th Street, Bradenton, Florida

Gurr Professional Services Inc.  
 202 Howard Street, Suite 1  
 Auburndale, Florida 33823  
 (863) 965-2200

# Groundwater Directional Flow

March 23, 2016

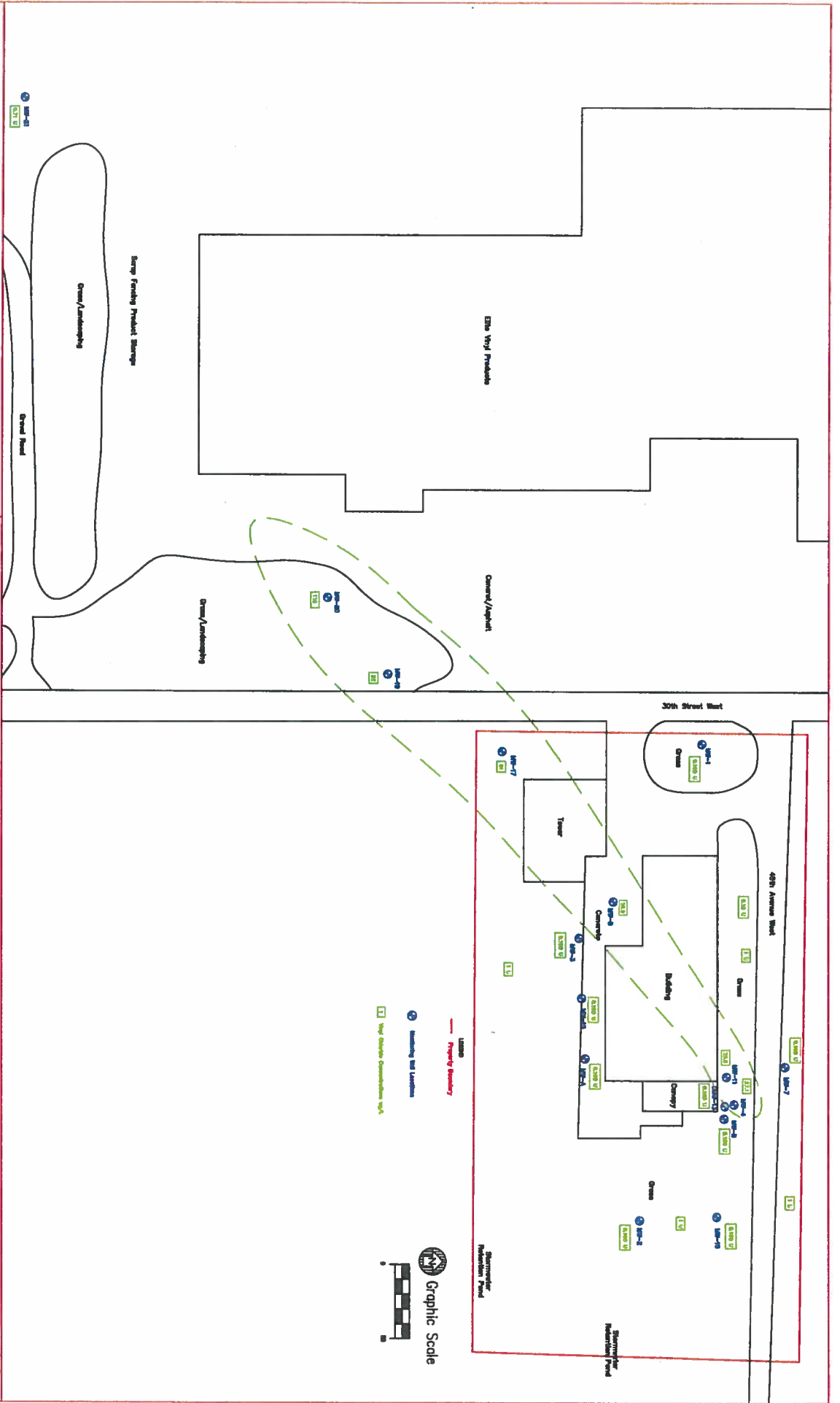
Facility ID: COM\_65187  
 DRAFTED: 03-21-2016

REVISED: 04-12-2016

PROJECT No. SAGO-05

FIGURE 3

## **Attachment 2 – Groundwater Plume**



**Former Riverside Products**  
 4443 West 30th Street, Bradenton, Florida

  
 Gurr Professional Services Inc.  
 202 Howard Street, Suite 1  
 Auburndale, Florida 33823  
 (863) 965-2200

Facility ID: COM\_65187

DRAFTED: 03-21-2016

REVISED: 02-03-2017

PROJECT No. SAGO-05

FIGURE 9

**Vinyl Chloride Impacted Groundwater Plume**

## **Attachment 3 – Summary data for deep wells**



**TABLE 2: GROUNDWATER MONITORING WELL ANALYTICAL SUMMARY - PAHs and TRPHs**

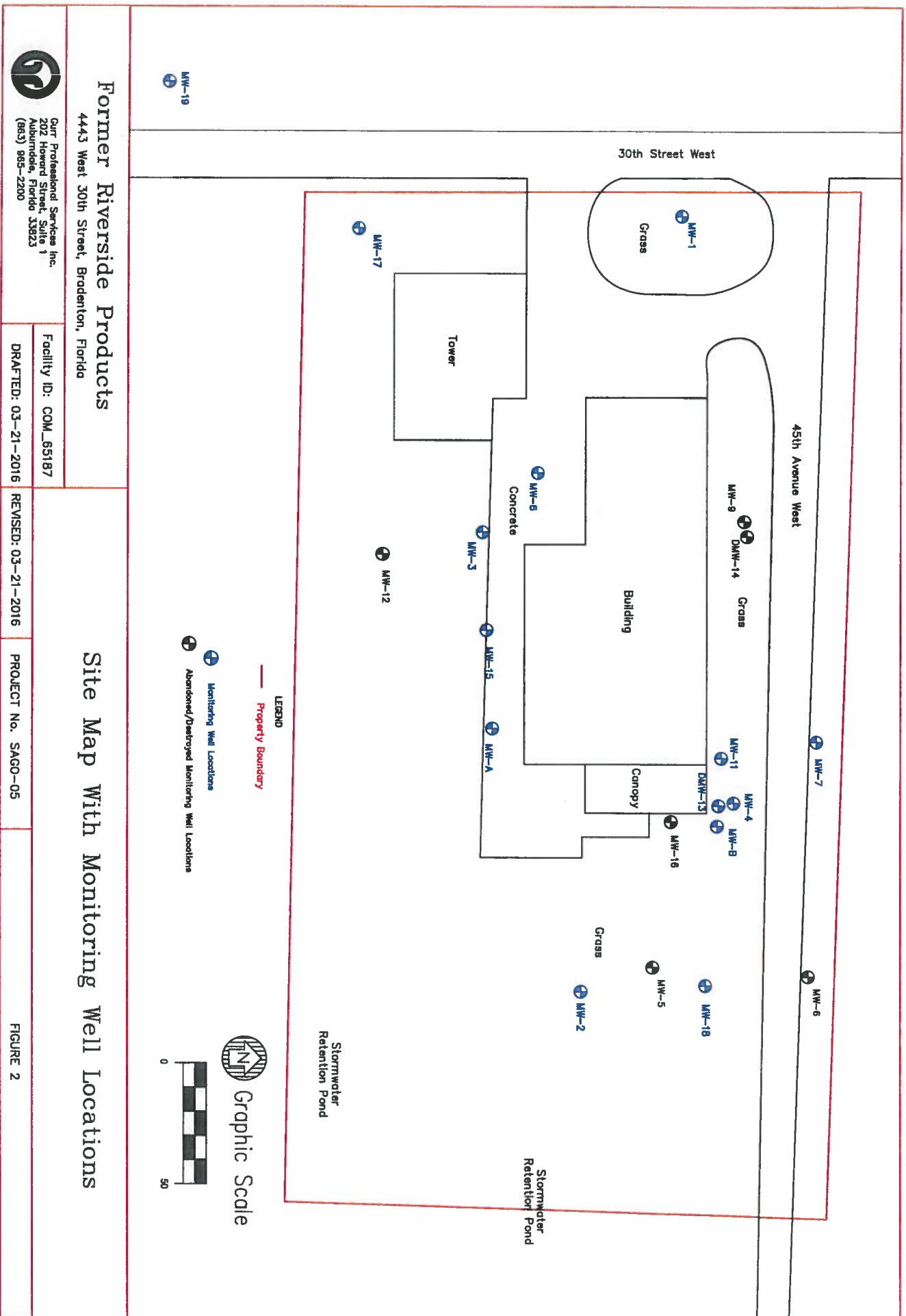
Facility ID#: COM\_65187


Facility Name: Former Riverside Products

See notes at end of table.

Sample Location	Date	Benzene (µg/L)	Ethylbenzene (µg/L)	Naphthalene (µg/L)	TRPH (µg/L)	cis-1,2-Dichloroethene (µg/L)	Tetrachloroethene (µg/L)	Trichloroethene (µg/L)	Vinyl chloride (µg/L)	Arsenic (µg/L)	Cadmium (µg/L)	Chromium (µg/L)	Iron (µg/L)	Nickel (µg/L)	Lead (µg/L)	TDS (µg/L)	Silver (µg/L)	Barium (µg/L)	Selenium (µg/L)	Mercury (µg/L)	
GCTLs		1	30	14	5000	70	3	3	1	10	50	100	300	100	15	5000000	100	20000	50	0	
NADCS		100	300	140	50000	700	300	300	100	100	5	1,000	3,000	1000	150	5000000	1000	20000	500	20	
MW-8	12/8/1998	1 U	1 U	1 U	NS	1 U	1 U	1 U	5.7	NS	NS	NS	NS	NS	NS	NS	NS	NS	NS	NS	
	3/27/2001	2.5 U	2.5 U	2.5 U	NS	45	2.5 U	2.5 U	150	NS	NS	NS	NS	NS	NS	NS	NS	NS	NS	NS	
	7/24/2002	1 U	1 U	1 U	NS	2.4	1 U	1 U	58	NS	NS	NS	NS	NS	NS	NS	NS	NS	NS	NS	
	9/6/2007	0.31 U	0.21 U	NS	250 U	3.0	0.23 U	0.29 U	31	23	1.0 U	2.0 U	3200	NS	4.0 U	NS	1.1	97	4.0 U	0.1 U	
2/25/2014	0.160 U	0.190 U	0.220 U	240	1.22	0.160 U	0.190 U	26.9	4.00	0.3 U	0.5	951	1.7 U	3.3 U	408000	NS	NS	NS	NS		
MW-9	12/8/1998	1 U	1 U	1 U	NS	9.7	1 U	1 U	1.1	NS	NS	NS	NS	NS	NS	NS	NS	NS	NS	NS	
	3/27/2001	2.5 U	2.5 U	2.5 U	NS	120	2.5 U	36	45	NS	NS	NS	NS	NS	NS	NS	NS	NS	NS	NS	
	7/24/2002	1 U	1 U	1 U	NS	1 U	1 U	1 U	1 U	NS	NS	NS	NS	NS	NS	NS	NS	NS	NS	NS	
	9/6/2007	0.31 U	0.21 U	NS	250 U	0.30 U	0.23 U	0.29 U	0.18 U	4.0 U	59	2.0 U	NS	NS	4.0 U	NS	NS	84	4.0 U	0.1 U	
2/25/2014	Not Located																				
MW-10	12/8/1998	1 U	1 U	1 U	NS	1 U	1 U	1 U	1 U	NS	NS	NS	NS	NS	NS	NS	NS	NS	NS	NS	
	2/25/2014	Not Located																			
MW-11	12/8/1998	1 U	1 U	30.8	NS	410	494	189	151	NS	NS	NS	NS	NS	NS	NS	NS	NS	NS	NS	
	1/31/2001	25 U	25 U	25 U	NS	1400	340	330	290	NS	NS	NS	NS	NS	NS	NS	NS	NS	NS	NS	
	3/27/2001	25 U	25 U	25 U	NS	1100	69	110	380	NS	NS	NS	NS	NS	NS	NS	NS	NS	NS	NS	
	5/2002					800	76	93	150												
	7/24/2002	10 U	10 U	10 U	NS	700	21	64	240	NS	NS	NS	NS	NS	NS	NS	NS	NS	NS	NS	
9/6/2007	0.31 U	0.21 U	NS	400	370	29	150	43	4.0 U	1.0 U	12	NS	NS	4.0 U	NS	1.0 U	160	4.0 U	0.1 U		
2/25/2014	0.160 U	0.190 U	0.220 U	NS	84.7	75.2	68.8	33.5	4.0 U	3.0 U	12.2	40.1	1.7 U	3.3 U	596000	NS	NS	NS	NS		
MW-12	12/8/1998	1 U	1 U	1 U	NS	1 U	3.5	1 U	1 U	NS	NS	NS	NS	NS	NS	NS	NS	NS	NS	NS	
	3/27/2001	1 U	1 U	1 U	NS	1 U	1 U	1 U	1 U	NS	NS	NS	NS	NS	NS	NS	NS	NS	NS	NS	
	2/25/2014	Not Located																			
DMW-13	12/8/1998	1 U	1 U	1 U	NS	1 U	1 U	1 U	1 U	NS	NS	NS	NS	NS	NS	NS	NS	NS	NS	NS	
	7/24/2002	1 U	1 U	1 U	NS	1 U	1 U	1 U	1 U	NS	NS	NS	NS	NS	NS	NS	NS	NS	NS	NS	
	9/6/2007	0.31 U	0.21 U	NS	250 U	0.30 U	0.23 U	0.29 U	0.18 U	4.0 U	1.0 U	2.0 U	NS	NS	4.0 U	NS	1.41	120	4.0 U	0.1 U	
2/25/2014	0.160 U	0.190 U	0.220 U	230 U	0.210 U	0.160 U	0.190 U	0.190 U	0.190 U	4.0 U	0.3 U	0.400	9.80	1.7 U	3.30 U	382000	NS	NS	NS		
DMW-14	12/8/1998	1 U	1 U	1 U	NS	1 U	1 U	1 U	1 U	NS	NS	NS	NS	NS	NS	NS	NS	NS	NS	NS	
	2/25/2014	Not Located																			

## **Attachment 4 –Location of deep wells**



  
 GPR Professional Services Inc.  
 202 Howard Street, Suite 1  
 Auburndale, Florida 33823  
 (883) 983-2200

Facility ID: COM\_65187

DRAFTED: 03-21-2016

REVISED: 03-21-2016

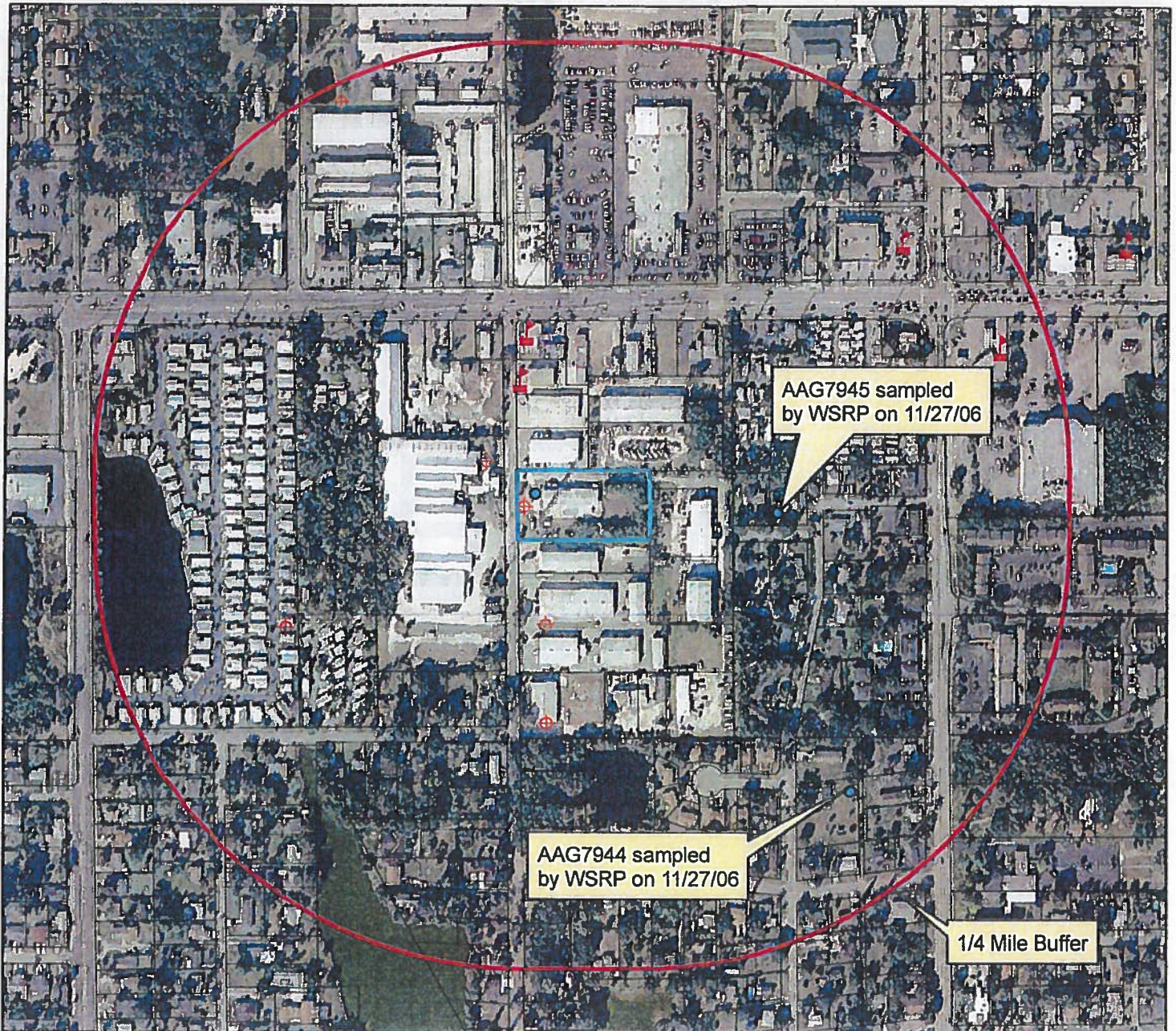
PROJECT No. SAGO-05

FIGURE 2

## **Attachment 5 – FDEP Well Survey**



# Riverside Products/Land Recovery 4443 30th Street



This map is for illustration only

## Legend

- COMET
- SuperAct Wells
- SuperAct Facilities
- All Hits Exceeding Standard
- Public Water Supply (PWS) Wells
- Water Supply Restoration (WSRP) Wells
- Cadastral 2005 (Property Appraiser Parcels)