



CONSERVATION AND PARK PROJECT WORK PLAN

Site Name: Triple Oak Preserve (Myakka Conservation Stewardship Area)

Area: 105+/- acres

Parcel IDs: 172520269, 172523003 and 205300059

Location: **Myakka City** – East of Betts Road and South of Anson Road

Zoning: A

Future Land Use: AG-R

Current Development Approvals: None

Natural Habitat and Features

The Triple Oak Preserve is 105+/- acres located in the Myakka City area. The property consists of approximately 50 acres of upland forest, 25 acres of forested wetland, 25 acre of mesic flatwoods, 5 acres of scrubby flatwood and an acre of pond and freshwater marsh. There are two homes on-site, which could serve as a visitor center and a venue for environmental education, meetings, and community programs. The location could also benefit IFAS due to close proximity to agricultural clients. Access to the nature preserve with hiking, biking, picnics, birding, etc. will benefit the rural but rapidly growing community.

Native habitat types have been established and managed by the landowners according to their Florida Fish and Wildlife Conservation Commission (FWC)-created Conservation Stewardship Plan, initiated by the owners through the FWC Landowner Assistance Program (LAP). As part of a reforestation project in 1997, 9,000 slash pine and 1,000 cypress trees were planted. In 2001, 19,000 long leaf pines and 1,000 cypress trees were planted. In addition to those forestry projects, the Oberlander’s estimate they have planted an additional 4,000 trees over the years.

Site Importance

The property contributes quality wildlife habitat to a natural connection between the Myakka River State Park and privately owned land with conservation easements to the north and west of Flatford Swamp. The land is also within the Florida Wildlife Corridor. The Longleaf Pine Ecosystem Geodatabase (LPEGDB) documents nine acres of longleaf pine on site, which contribute toward objectives of the Florida’s Forest Action Plan and America’s Longleaf Range-wide Conservation Plan for Longleaf. Deer, gopher tortoise, southern fox squirrel, turkey, sandhill cranes, wood storks and other wading birds, crested caracara and bald eagles commonly occur on site. Southeastern American kestrel, tricolor heron, little blue heron, and eastern indigo snake also occur.

Proposed Site Protection

Fee Simple Acquisition at a discounted cost.

Proposed Public Access

Opportunities for public access and passive recreation include hiking/biking over a small network of trails and great nature observation (birding, etc.). ADA visitor center/restroom and potential for ¼ mile paved trail using existing driveway.

Resource Management

Management of the site for resource protection and restoration would involve frequent application of prescribed fire, as well as invasive and nuisance species management, at a service level consistent with other county preserve lands.

Hydrologic Rehabilitation and Habitat Restoration

None required or planned.

VACANT
District 1

AMANDA
BALLARD
District 2

KEVIN
VAN OSTENBRIDGE
District 3

MIKE
RAHN
District 4

RAY
TURNER
District 5

JASON
BEARDEN
At Large

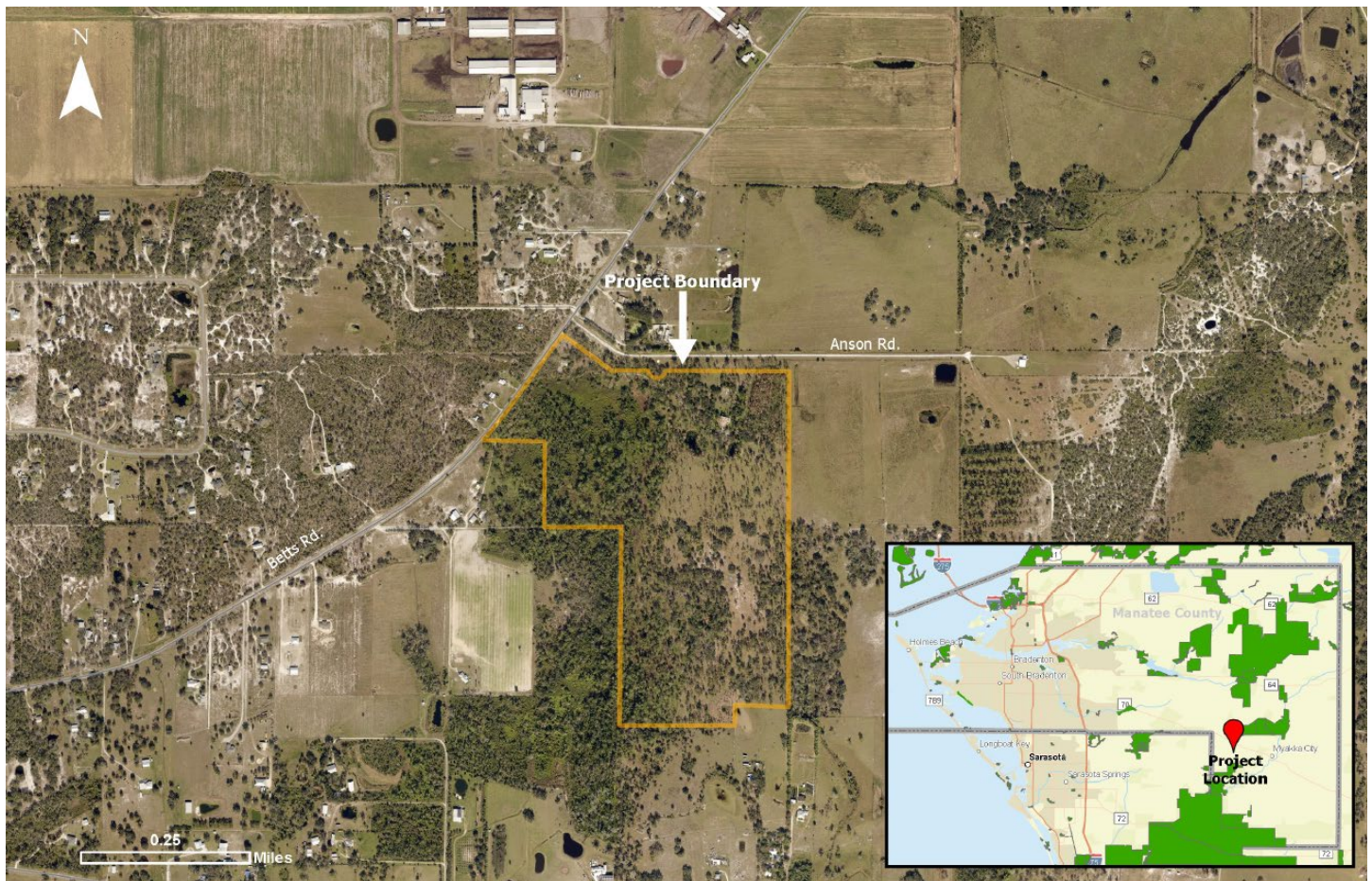
GEORGE W.
KRUSE
At Large

Anticipated Costs, Funding Partnership and Revenue

- County Purchase from Owner: \$3,606,000
- Possible renovation of large home to accommodate future needs.
- Maintenance of 2 houses.
- Create parking lot/trail head and trail network through property including interpretive signage for users. Design/Permitting Construction – \$275,000 non-recurring. Annual maintenance – \$22,000.

Note that the Triple Oak Preserve was previously referred to as the Myakka Conservation Stewardship Area during the Manatee County conservation acquisition process.

Location Map



Preliminary Concept Plan

