

Beach Erosion Control



Last Updated: November 2024

PROJECT DETAILS

Project Numbers:

6003408, 6003411,
6003412, 6003413,
6003415, 6003416,
6003417, 6003418,
6003419, NR01805

[Capital Improvement Plan](#)

Project Managers:

Charlie Hunsicker

Debra Woithe

PROJECT HIGHLIGHTS AND COMMUNITY BENEFITS

In 1992-1993, the first beach nourishment of Anna Maria Island was constructed in order to protect critical upland infrastructure. Since then, approximately 6.9 million cubic yards of sand from offshore borrow areas have been placed as a result of the County's and USACE's beach preservation efforts. Beach renourishment projects not only provide recreational beach width for the benefit of residents and visitors, but during storm events, the sand also provides critical protection for structures and infrastructure landward of the beach. In addition, the beach provides critical habitat and nesting areas for protected species such as sea turtles and shorebirds. This beach nourishment management program is very much like a roadway or other such infrastructure, as in once it is built, it must be maintained. The work you see is maintenance that will help ensure continued presence of a sandy beach and storm protection for the upland. The sand for large-scale beach nourishment projects such as this come from our permitted, offshore "borrow areas". The borrow area for this project is located about at the south end of Anna Maria Island, in the Longboat Pass channel.

PROJECT SCHEDULE

Design Start:

June 1, 2013

Design End:

December 31, 2024

Construction Start:

June 1, 2013

Construction End:

December 31, 2025

FINANCIAL STATUS

Appropriated to Date \$32,365,699

Future Appropriation \$0

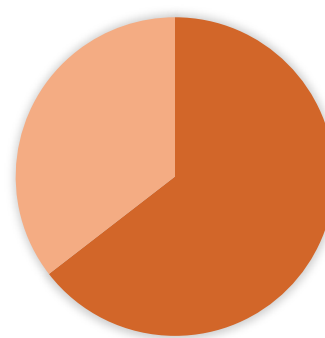
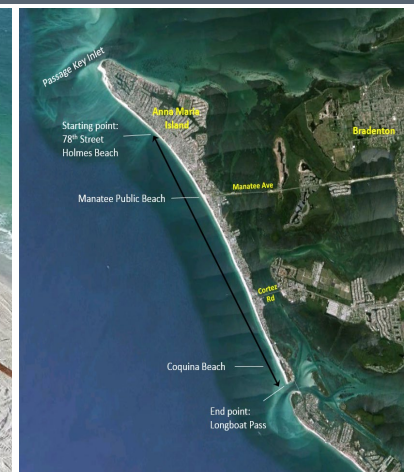
Total Anticipated Costs \$32,365,699

Funds Encumbered/
Spent to Date \$20,886,097

Funds Remaining \$11,479,602

Funding Strategy

Beach Erosion Control Tourist
Tax, FDEP Grant, USACE Grant,
FEMA Federal Capital Grant,
FEMA State Grant, Debt



Funds
Encumbered/
Spent to Date:
\$20,886,097
(65%)

Funds
Remaining:
\$11,479,602
(35%)