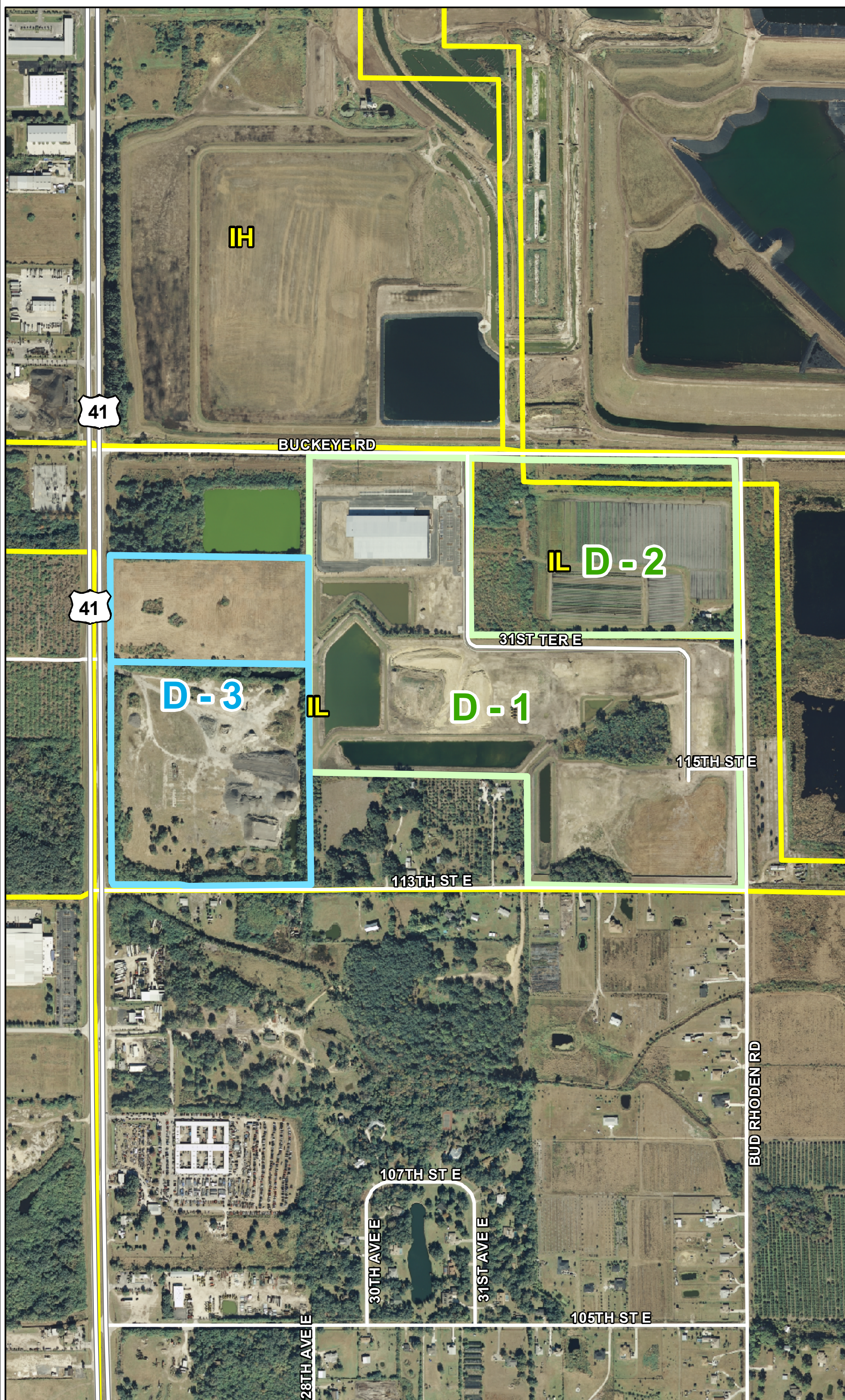



PDEZ-08-22 (Z)(G)(R2)
AREA D

Construction services establishment
Building materials establishment
Motor vehicle sales, rental & leasing
School of special education
Neighborhood retail
Bank
Business services
Professional office

D-1 - 98 ACRES
D-2 - 35 ACRES
D-3 - 57 ACRES
TOTAL - 190 ACRES



This map was developed by the Manatee County Geographic Information Systems Division. It is provided for general reference and is not warranted in any way. Errors from non-coincidence of features from different sources may exist. The Manatee County BOCB shall be held harmless for inappropriate or unintended uses of the information.



0 300 600 900

Feet

Map Author: paulh
Creation Date: 3/2/2011