

PORT MANATEE ENCOURAGEMENT ZONE  
PDEZ-08-20 (Z)(G)(R2)

PDEZ-08-20 (Z)(G)(R2)  
AREA B

Acreage - ± 1,041

Height, Bulk, Dimensional, & Landscape Requirements:

Zone B- Max. Height- 75 ft./interior\* , 55 ft./perimeter\*  
Min. Setbacks- 25'-F, 20'-S, 30'-R  
FAR- .75 in IL and .5 in IH  
Roadway Buffer- 20 ft. per 603.21.6.1

The minimum landscape open space is 15%

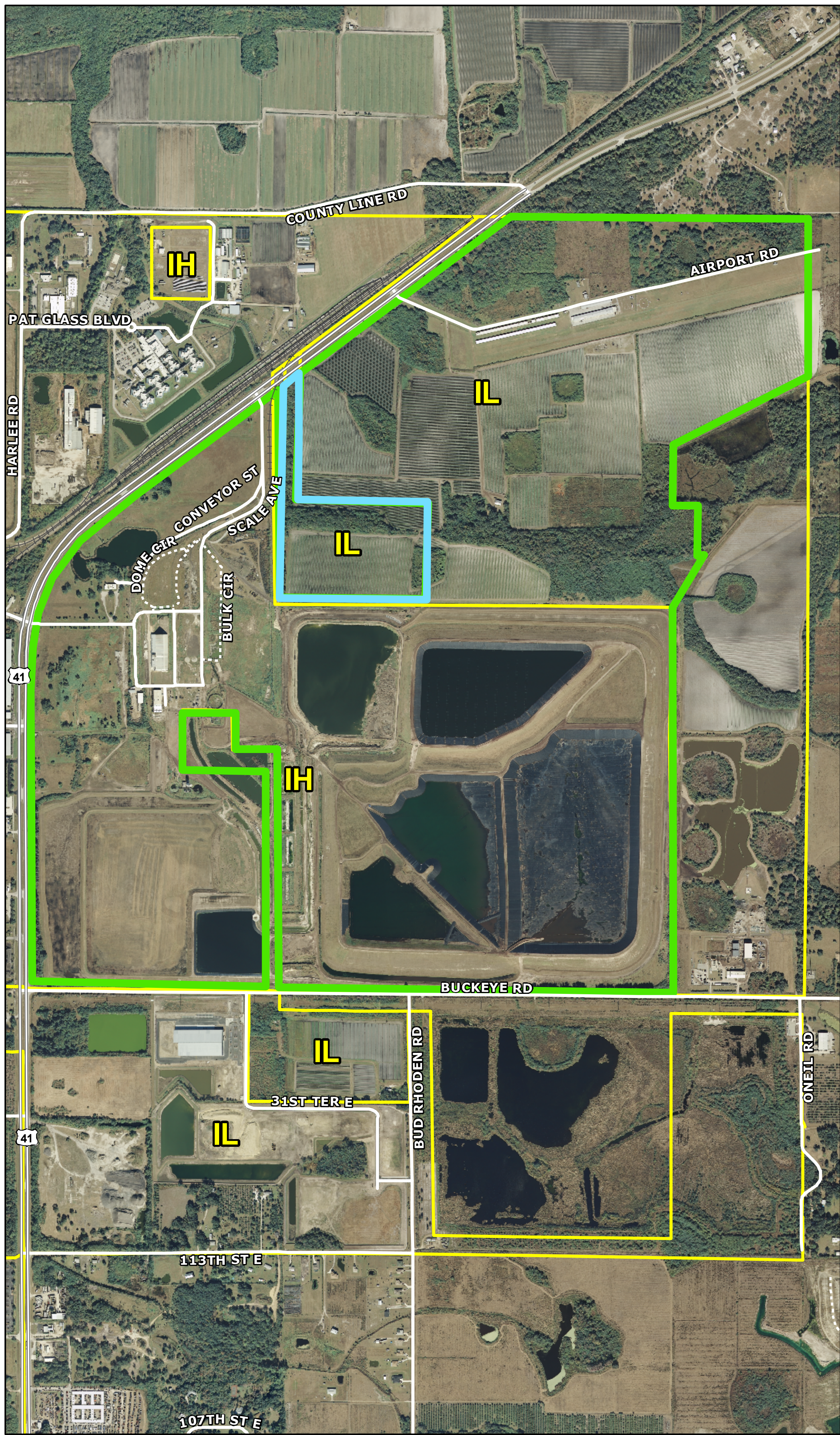
\* Perimeter is outer 200' of area

Uses in IH FLUC

- Agricultural Research Facilities  
Short Term Agricultural Uses  
Agricultural Products Processing Plants  
Agriculture  
Animal Products Processing Facility  
Sawmills  
Industrial Service Establishment  
Motor Vehicle Repair, Major  
Office  
Printing, Heavy  
Wholesale Trade Establishment  
Heavy Manufacturing  
Light Manufacturing  
Research and Development Activity  
Antenna  
Camouflaged Tower (150' Max.)  
Guyed Tower  
Lattice Tower (400' Max)  
Monopole Towers  
Post Offices  
Public Community Use  
Public Use Facility  
Radio, TV, Communications, &  
Microwave Facilities  
Utility Use  
Minor Earthmoving  
Major Earthmoving  
Passive Recreational Uses  
Day Care Facilities (Accessory)  
Airport, Public or Private  
Bus RR Passenger Station  
Heliport  
Helistop  
Intermodal Terminal  
Motor Freight Terminal  
Motor Pool Facilities  
Railroad Switching/Classification Yard  
Warehouse
- Bank Drive Thru  
Drive Thru Eating Establishment  
Dry Cleaners, pick up  
Eating Establishments  
Exterminating and Pest Control  
Farm Equipment and Supply Establishment  
Farming Service Establishment  
Lumberyard  
Hotels  
Outdoor Storage  
Service Station  
Towing Service Establishment  
Gas Pumps

Uses in IL FLUC

- Agricultural Research Facilities  
Short Term Agricultural Uses  
Agricultural Products Processing Plants  
Agriculture  
Animal Products Processing Facility  
Sawmills  
Industrial Service Establishment  
Motor Vehicle Repair, Major  
Office  
Printing, Heavy  
Wholesale Trade Establishment  
Light Manufacturing  
Research and Development Activity  
Antenna  
Camouflaged Tower (150' Max.)  
Gas Pumps  
Guyed Tower  
Lattice Tower (400' Max)  
Monopole Towers  
Post Offices  
Public Community Use  
Public Use Facility  
Radio, TV, Communications, & Microwave  
Facilities  
Utility Use  
Minor Earthmoving  
Passive Recreational Uses  
Day Care Facilities (Accessory)  
Bus RR Passenger Station  
Heliport  
Helistop  
Intermodal Terminal  
Motor Freight Terminal  
Motor Pool Facilities  
Railroad Switching/Classification Yard  
Warehouse  
Farming Service Establishments  
Drive-Thru Eating Establishment  
Farm Equipment and Supply Establishment  
Service Station  
Eating Establishment  
Bank Drive Thru  
Dry Cleaners, Pick-Up  
Exterminating and Pest Control  
Hotels  
Lumberyard  
Outdoor Storage  
Towing Service Establishment



NEW EZ PARCELS

FUTURE LAND USE

ROADS

EXISTING EZ PARCELS

590610509

591400007

595900002

590600059

NEW PARCELS

590600059

05501,1001,650

Feet

This map was developed by the Manatee County Geographic Information Systems Division. It is provided for general reference and is not warranted in any way. Errors from non-coincidence of features from different sources may exist. The Manatee County BOCC shall be held harmless for inappropriate or unintended uses of the information.

Map Author: paulh  
Creation Date: 3/2011  
Map Document Name: C:\PLANNING\John OPDEZ Expansion